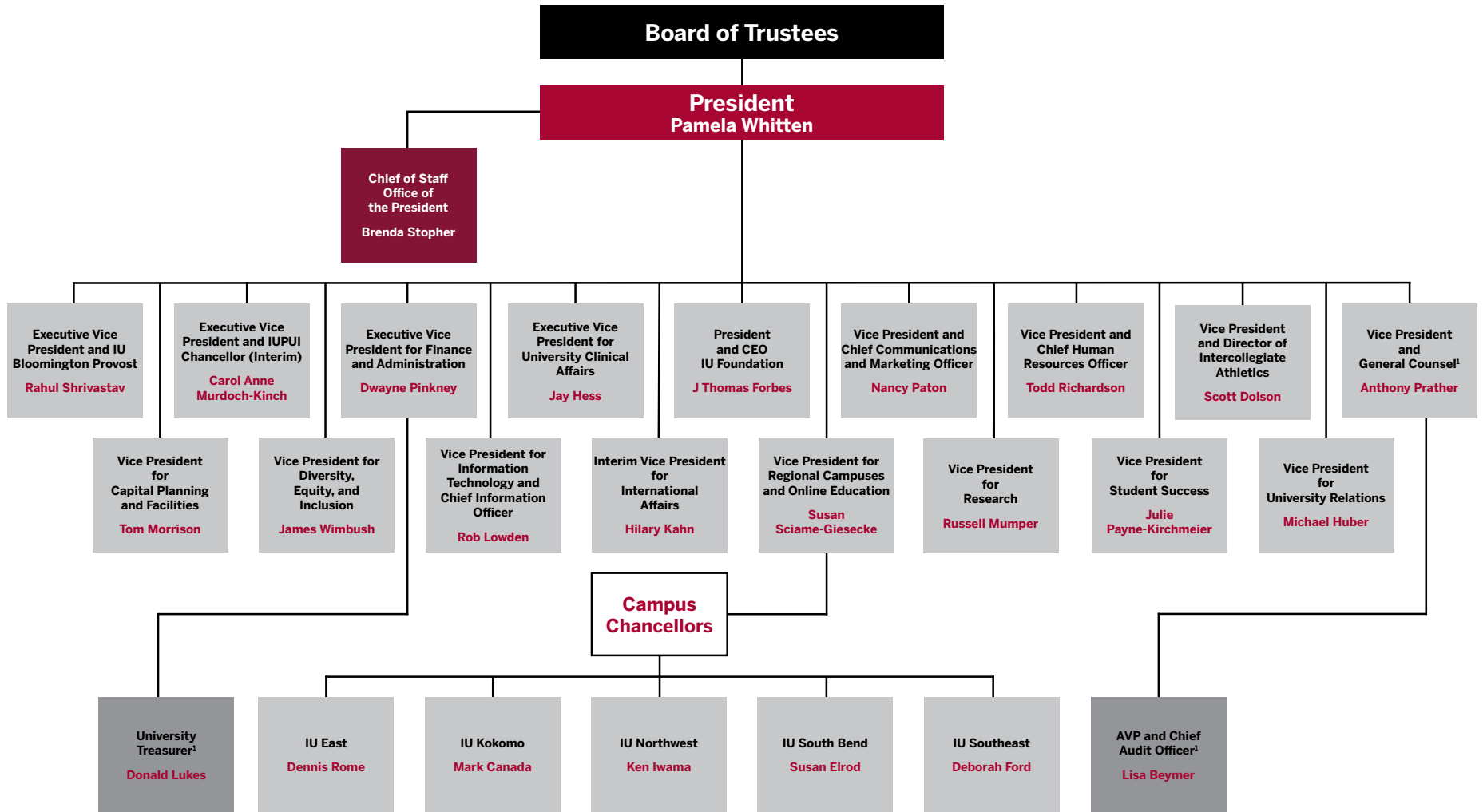


Indiana University

President's Cabinet



¹Also reports to the Board of Trustees

Indiana University

- **Board of Trustees**
 - **President Pamela Whitten**
 - **Chief of Staff, Office of the President Brenda Stopher**
 - **Executive Vice President and IU Bloomington Provost Rahul Shrivastav**
 - **Executive Vice President and IUPUI Chancellor (Interim) Carol Anne Murdoch-Kinch**
 - **Executive Vice President for Finance and Administration Dwayne Pinkney**
 - **University Treasurer¹ Donald Lukes**
 - **Executive Vice President for University Clinical Affairs Jay Hess**
 - **President and CEO, IU Foundation J Thomas Forbes**
 - **Vice President and Chief Communications and Marketing Officer Nancy Paton**
 - **Vice President and Chief Human Resources Officer Todd Richardson**
 - **Vice President and Director of Intercollegiate Athletics Scott Dolson**
 - **Vice President and General Counsel¹ Anthony Prather**
 - **AVP and Chief Audit Officer¹ Lisa Beymer**
 - **Vice President for Capital Planning and Facilities Tom Morrison**
 - **Vice President for Diversity, Equity, and Inclusion James Wimbush**
 - **Vice President for Information Technology and Chief Information Officer Rob Lowden**
 - **Interim Vice President for International Affairs Hilary Kahn**
 - **Vice President for Regional Campuses and Online Education Susan Sciame-Giesecke**
 - **Campus Chancellors**
 - **IU East Dennis Rome**
 - **IU Kokomo Mark Canada**
 - **IU Northwest Ken Iwama**
 - **IU South Bend Susan Elrod**
 - **IU Southeast Deborah Ford**
 - **Vice President for Research Russell Mumper**
 - **Vice President for Student Success Julie Payne-Kirchmeier**
 - **Vice President for University Relations Michael Huber**

The President's Cabinet is composed of the vice presidents, the chief of staff, and the president and CEO of the IU Foundation.

¹Also reports to the Board of Trustees